

What's New in Forecast Pro TRAC v6

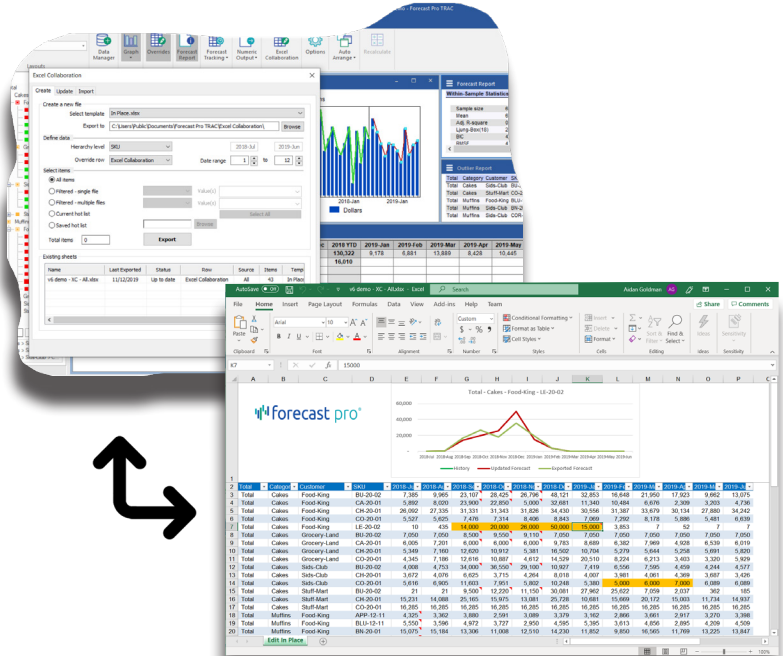
We are pleased to announce Forecast Pro TRAC Version 6!

Version 6 sports a dramatically improved user interface and introduces Excel-based collaborative forecasting functionality. Members of your team can now view and make adjustments to your Forecast Pro forecasts in Excel which can then be easily imported back into your Forecast Pro project. In addition, improvements have been made throughout the software including the ability to include quarterly and annual totals in the override grid and reports, color-coded "heat maps" for exception views, and much more.

Seamless Excel-based Collaboration:

- ✓ This all-new functionality allows you to generate "Forecast Pro Collaboration Spreadsheets" which enable members of your team to view and modify your Forecast Pro forecasts in Excel. Any forecast overrides and comments created in Excel can then be imported back into Forecast Pro with a click of the mouse.
- ✓ Pre-formatted collaboration spreadsheets support numeric and graphical display of the history, forecasts and overrides, and include automated item-lookup capability. They can also be customized in Excel to meet your specific needs.
- ✓ The Excel Collaboration Command Center allows you to easily manage the collaborative-forecasting process by maintaining a record of the collaboration spreadsheets associated with your Forecast Pro project and by displaying their current status.

Watch an Excel-based Collaboration Video [here](#)



Dramatically improved user interface:

- ✓ "Home screen" similar to Microsoft Office from which you can easily manage multiple projects
- ✓ Ribbon menu structure with clear labels for all Forecast Pro commands
- ✓ Flexible table-cloth on which to display/modify views (e.g. the graph, grid, reports, etc.), allowing for customizable and storable "layouts" which have replaced "bookmarks"
- ✓ "Snap to" and auto-arrange functionality allowing you to easily display and customize all open views
- ✓ Omnipresent customizable Quick Access toolbar

Graphical improvements:

- ✓ Ability to display up to 5 different graph views simultaneously
- ✓ Support for multi-item stacked bar and area charts
- ✓ "Heat maps" (i.e. color-coded metrics) for exception reporting
- ✓ Ability to display Quarterly and Annual totals in override grid and reports
- ✓ Enhanced override grid functionality, including the ability to build formulas using mouse-selected cell references (similar to Excel)

