

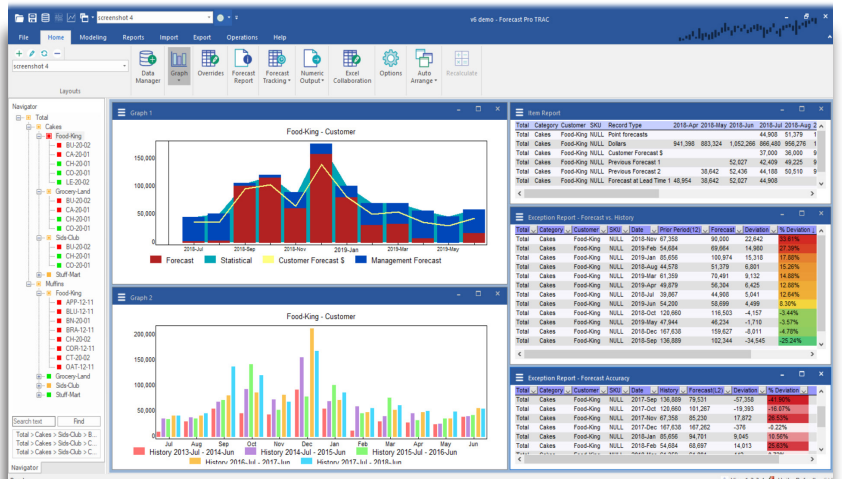
What's New in Forecast Pro 100 v11

We are pleased to announce Forecast Pro 100 Version 11!

Version 11 sports a dramatically improved user interface allowing you to customize your forecasting projects quickly and easily. In addition, improvements have been made throughout the software including the ability to include quarterly and annual totals in the override grid and reports, color-coded "heat maps" for exception views, and much more.

Dramatically improved user interface:

- ✓ "Home screen" similar to Microsoft Office from which you can easily manage multiple projects
- ✓ Ribbon menu structure with clear labels for all Forecast Pro commands
- ✓ Flexible table-cloth on which to display/modify views (e.g. the graph, grid, reports, etc.), allowing for customizable and storable "layouts" which have replaced "bookmarks"
- ✓ "Snap to" and auto-arrange functionality allowing you to easily display and customize all open views
- ✓ Omnipresent customizable Quick Access toolbar



Graphical improvements:

- ✓ Ability to display up to 5 different graph views simultaneously
- ✓ Support for multi-item stacked bar and area charts
- ✓ "Heat maps" (i.e. color-coded metrics) for exception reporting
- ✓ Ability to display Quarterly and Annual totals in override grid and reports
- ✓ Enhanced override grid functionality, including the ability to build formulas using mouse-selected cell references (similar to Excel)